

SLI

Gambell

Savoonga

JANUARY 28-29

BARROW

Barrow

Wainwright

Point Lay

Nuiqsut

Kaktovik

FEBRUARY 11

KOTZEBUE

Kotzebue

Point Hope

Kivalina

Buckland

FEBRUARY 22

NOME

Diomede / Wales / King I.

Brevig Mission

Teller / Shishmaref

FEBRUARY 25

Regional meetings



Savoonga



Savoonga



Savoonga



St. Lawrence Island Community and Partners on Research

Some projects focusing specifically on water observations and documentation of occurrence include:

- SMOI (Shooting Our Ice)
- BISON (Bering Sea Subnetwork)
- BISC (Sea Ice for Bering Sea Outback)

A research project "Community Based Ocean and Ice in the Bering Sea Region," a University of Alaska project "Ice Data Indigenous Values Network on St. Lawrence Island," and other projects, such as the cultural exchanges between organizations and the National Park Service St. Lawrence Island Program, environmental change concerns about the Russian and Alaskan sides of the Bering Sea.

Participating Organizations:

Savoonga



Savoonga

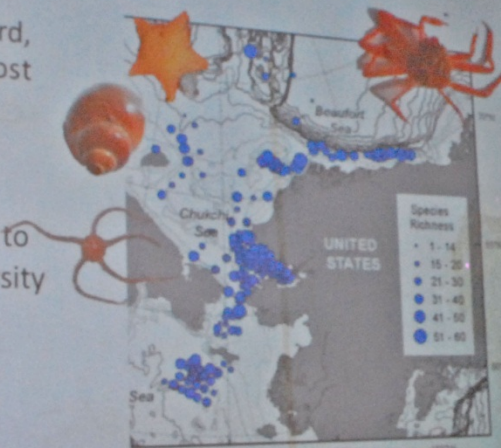


Gambell

Theme 4: Current state of lower trophic prey-base and higher trophic feeding hot spots

Benthic community structure: epifaunal species richness

- Data sources: Blanchard, Bluhm/Iken, Feder, Frost & Llowry, Lowvorn
- Goal: link benthic biodiversity data to productivity gradients to anticipate future diversity changes

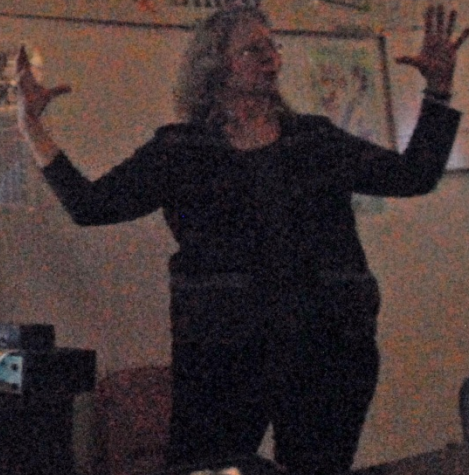


Preliminary!

Graph by B. Bluhm, A. Bayard

Pacific Arctic Marine Regional Synthesis (PacMARS)

Play Pulltabs & Bingo at Q-Bingo



FRAGILE

Kotzebue



Kotzebue



Kotzebue



Kotzebue

